



SPRUCE GROVE PROTECTIVE SERVICES FACILITY

SPRUCE GROVE, AB

QUICK FACTS

- + CM Delivery
- + Fire Station Addition
- + Renovations
- + LEED®
- + ~58,000 square feet
- + \$20-Million Budget
- + Smith + Andersen Mechanical

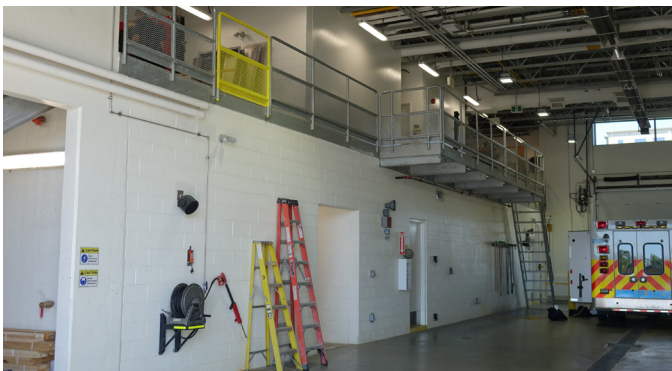


PHOTO CREDIT: JEN COL Construction



SPRUCE GROVE PROTECTIVE SERVICES FACILITY

ABOUT THIS PROJECT

- + Two-storey expansion to the Spruce Grove Protective Services building.
- + Added a fire station, providing fire services and emergency medical services (EMS) for the growing Spruce Grove community.
- + Project scope included renovations to the existing building (which houses enforcement services staff and an RCMP detachment).
- + Mechanical design focussed on creating a comfortable habitat for Spruce Grove first responders.
- + Utilized variable air volume boxes and HVAC systems.
- + Fire protection was heavily featured on both floors of the expansion.
- + LEED certified.

LOCATION

Spruce Grove, AB

SMITH + ANDERSEN SERVICES PROVIDED

Mechanical

KEY TEAM MEMBERS

S2 Architecture
RJC Engineers
SMP Engineering (Electrical)
Urban Systems Ltd.
EcoAmmo Sustainable Consulting

SIZE

Addition: 36,253 sq. ft.
(3,368 sq. m)
Renovated: 22,012 sq. ft.
(2,045 sq. m.)

BUDGET

\$20 Million

COMPLETION YEAR

2020

SUSTAINABILITY

LEED®

HOT BUTTONS

CIVIC

FIRE STATION

MECHANICAL DESIGN

EMS

LEED

CM DELIVERY



PHOTO CREDIT: JEN COL Construction