



160 FRONT STREET WEST

TORONTO, ON

QUICK FACTS

- + High-Rise
- + Class-AAA Office Tower
- + CM Delivery
- + 1.4 million square feet
- + \$450-million budget
- + LEED® Platinum (Target)
- + WELL Certified Silver (Target)
- + Integration with Heritage Building
- + Smith + Andersen Mechanical
- + Sustainability Services (Footprint)



PHOTO CREDIT: Adrian Smith + Gordon Gill Architecture



160 FRONT STREET WEST

ABOUT THIS PROJECT

- + 46-storey Class AAA office building, featuring direct connection to Toronto's transit hub via the PATH system and 339 parking stalls.
- + Fully leased years prior to the expected completion date with major tenants such as TD Bank (long-term lease occupying 33 floors) and Ontario Teachers' Pension Plan.
- + Architectural features include a saw-tooth curtain wall, podium flooring, and a heritage facade.
- + Sustainability design measures include a reclaimed rain water system and Enwave cooling to achieve the target of 25 per cent more energy efficient than the Ontario Building Code requires.
- + Designed perimeter diffusers that use change-over technology to optimize the high-speed discharge of air, with low acoustic power to heat the windows in the winter (eliminating the need for low level heat even though the building is made up of floor-to-ceiling glass windows).
- + Mechanical design included a non-condensing four-way valve fan coil unit perimeter system, a VAV compartments unit interior system, variable speed pumping systems, and high-efficiency condensing boilers.
- + Considered anchor tenant requests when implementing requirements for base building upgrades in the mechanical design.

LOCATION

Toronto, ON

SMITH + ANDERSEN SERVICES PROVIDED

Mechanical,
Sustainability (Footprint)

KEY TEAM MEMBERS

Adrian Smith + Gordon Gill
Architecture
B+H Architects

SIZE

1,400,000 sq. ft. (130,064 sq. m.)

BUDGET

\$450 million

COMPLETION YEAR

2023

SUSTAINABILITY

LEED Platinum (Target)
WELL Certified Silver (Target)

HOT BUTTONS

OFFICE SPACES

HIGH-RISE

HERITAGE

SUSTAINABLE DESIGN

BAS

WELL SILVER

CM DELIVERY

LEED PLATINUM

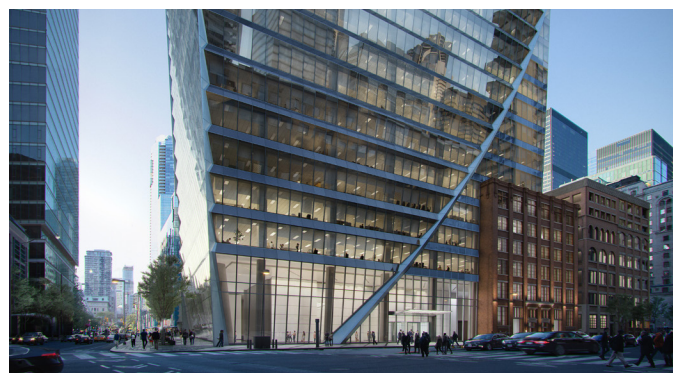
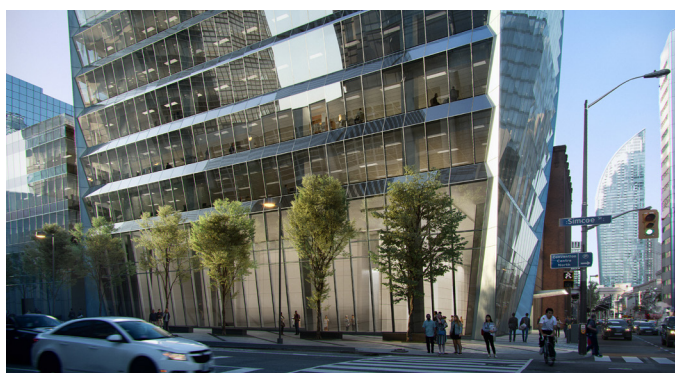


PHOTO CREDIT: Adrian Smith + Gordon Gill Architecture